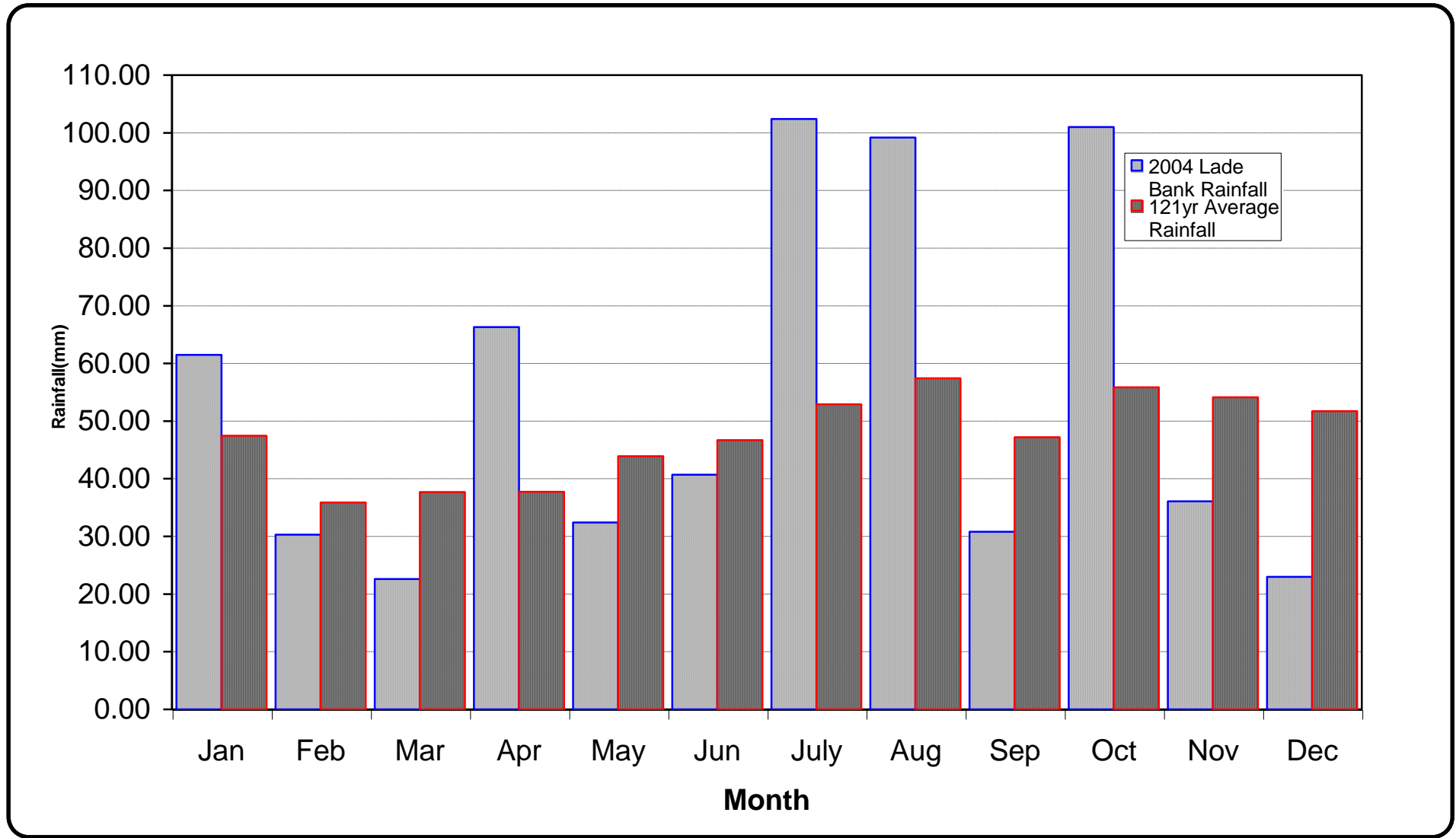


LADE BANK MONTHLY RAINFALL FOR THE YEAR 2004



RAINFALL FOR THE YEAR 2004 ALL WITHAM FOURTH STATIONS

2004 Rainfall Station	Jan	Feb	Mar	Apr	May	Jun	July	Aug	Sep	Oct	Nov	Dec	Total (mm)	Total (ins)	% International Standard Av. at Lade Bank**
Lade Bank	61.50	30.30	22.60	66.30	32.40	40.70	102.40	99.20	30.80	101.00	36.10	23.00	646.30	25.44	112.3%
Hobhole	79.30	33.00	26.30	61.20	34.00	54.40	74.10	101.80	32.60	116.50	36.60	26.00	675.80	26.61	117.4%
Leverton	62.40	24.90	35.50	58.40	36.90	47.80	96.20	103.20	31.80	107.00	40.90	22.50	667.50	26.28	116.0%
Halton Fenside	76.50	32.80	22.70	62.50	45.10	45.10	103.70	88.80	44.50	89.00	39.30	21.30	671.30	26.43	116.6%
Cannister	63.10	28.20	27.90	71.80	43.60	47.60	94.40	133.90	27.30	93.50	31.80	21.00	684.10	26.93	118.8%
New York	68.00	29.40	25.50	80.10	35.40	42.60	116.50	111.60	31.30	89.20	39.20	19.30	688.10	27.09	119.5%
YearlyAv.															
Monthly Av. (mm)	68.47	29.77	26.75	66.72	37.90	46.37	97.88	106.42	33.05	99.37	37.32	22.18	672.18	(mm)	116.8%
Monthly Av. (ins)	2.70	1.17	1.05	2.63	1.49	1.83	3.85	4.19	1.30	3.91	1.47	0.87	26.46	(ins)	
Monthly Average Lade Bank 1883 to 2003 (121 years)															
	47.45	35.86	37.70	37.74	43.90	46.69	52.90	57.45	47.19	55.86	54.15	51.72	568.61	(mm)	
	1.87	1.41	1.48	1.49	1.73	1.84	2.08	2.26	1.86	2.20	2.13	2.04	22.39	(ins)	
004 Average/Lade Bank 121 Year Average %															
	144.3%	83.0%	71.0%	176.8%	86.3%	99.3%	185.0%	185.2%	70.0%	177.9%	68.9%	42.9%	118.2%		
The 30 Year International Standard Average at Lade Bank (1961 to 1990) : 575.62															
Year	1992	1993	1994	1995	1996	1997	1998	1999	2000	2001	2002	2003	2004		
Av. Total for Area (mm)	696.40	699.50	644.40	464.30	457.43	624.25	710.28	678.08	711.25	652.48	709.92	529.03	672.18		
Av. Total for Area (ins)	27.42	27.54	25.37	18.28	18.01	24.58	27.96	26.70	28.00	25.69	27.95	20.83	26.46		
% Int. Standard Av.	121.0%	121.5%	111.9%	80.7%	79.5%	108.4%	123.4%	117.8%	123.6%	113.4%	123.3%	91.9%	116.8%		

Rainfall Statistics

LADE BANK RAINFALL - 1883 TO 2004 (mm)

TOP 5 MAXIMUM AND MINIMUM RECORDED MONTHLY TOTALS

JANUARY				FEBRUARY				MARCH				APRIL			
Maximum		Minimum		Maximum		Minimum		Maximum		Minimum		Maximum		Minimum	
YEAR	mm	YEAR	mm	YEAR	mm	YEAR	mm	YEAR	mm	YEAR	mm	YEAR	mm	YEAR	mm
1956	133.15	2000	18.10	1900	110.03	1947	5.59	1947	96.56	1961	7.37	2000	106.00	1912	5.34
1943	105.45	1953	17.53	1977	109.00	1886	5.34	1981	92.20	1929	7.11	1970	81.57	1890	5.34
1948	97.32	1901	14.23	1958	85.89	1959	5.08	1909	79.53	1944	6.61	1983	79.00	1974	5.30
1999	95.30	1905	13.98	1966	81.57	1891	1.78	1988	77.60	1935	6.61	1981	77.40	1938	4.32
1960	91.98	1997	13.40	1980	75.90	1985	1.70	1951	75.47	1938	5.08	1920	71.91	1893	2.54
AVER. 45.45				AVER. 35.86				AVER. 37.70				AVER. 37.74			
2004 78.30				2004 30.30				2004 22.60				2004 66.30			
MAY				JUNE				JULY				AUGUST			
1979	105.10	1947	10.67	1966	123.49	1976	7.90	1915	168.47	1921	10.42	1912	156.27	1983	9.20
1967	104.69	1959	6.35	1978	122.90	1887	7.62	1936	151.70	1952	9.66	1917	113.07	2003	6.30
1937	103.67	1935	5.59	1997	120.00	1960	7.62	1888	138.23	1911	8.13	1903	110.53	1995	3.00
1889	95.54	1970	5.34	1980	115.70	1962	4.57	2002	125.30	1906	6.10	1927	107.48	1913	0.76
1932	94.02	1989	4.00	2003	115.20	1925	2.03	1940	125.02	1982	3.90	1992	106.00	1947	0.51
AVER. 43.90				AVER. 46.69				AVER. 52.90				AVER. 57.45			
2004 32.40				2004 40.70				2004 102.40				2004 99.20			
SEPTEMBER				OCTOBER				NOVEMBER				DECEMBER			
1883	205.57	1915	10.16	1903	145.35	1920	10.93	1970	115.11	1945	21.34	1915	124.76	1941	15.75
1896	138.99	1996	6.70	1960	133.15	1965	9.40	1946	115.11	1889	20.33	1965	121.71	1913	15.75
1965	106.47	1969	6.35	1885	121.97	1978	8.90	2000	100.10	1896	18.30	1978	117.00	1933	13.47
1993	102.70	1959	4.57	1892	119.17	1947	5.84	1939	99.10	1909	17.02	1914	112.06	1890	12.45
1991	102.40	1898	4.07	1891	104.44	1972	4.32	1969	98.34	1920	11.43	1960	106.47	1932	8.64
AVER. 47.19				AVER. 55.86				AVER. 54.15				AVER. 51.72			
2004 30.80				2004 101.00				2004 36.10				2004 23.00			

 Wettest month in 2004
 Driest month in 2004
 5 Wettest months recorded
 5 driest months recorded

TOP 10 ANNUAL RAINFALLS RECORDED

Maximum		Minimum		Maximum Daily Totals		
YEAR	mm	YEAR	mm	YEAR	MONTH DATE	Mm
1883	852.00	1921	337.19	1883	SEP ?	91.00
1960	761.54	1887	393.35	1968	JUL 10	63.75
1903	733.08	1890	396.14	1993	OCT 12	59.10
1966	730.28	1995	428.80	1912	AUG 26	57.15
2000	711.25	1947	438.32	1956	JAN 8	54.61
1912	705.89	1934	439.59	2002	JUL 30	53.40
1886	704.37	1964	443.66	1931	AUG 8	51.05
1965	703.60	1959	444.68	1967	AUG 10	48.51
1992	701.50	1905	450.77	1900	DEC 31	48.26
1968	692.68	1929	452.04	1978	JUN 29	47.50
AVER. 569.25				2004 JUL 22 26.90		
2004 646.30				1894 - 2004 (excluding 1901)		