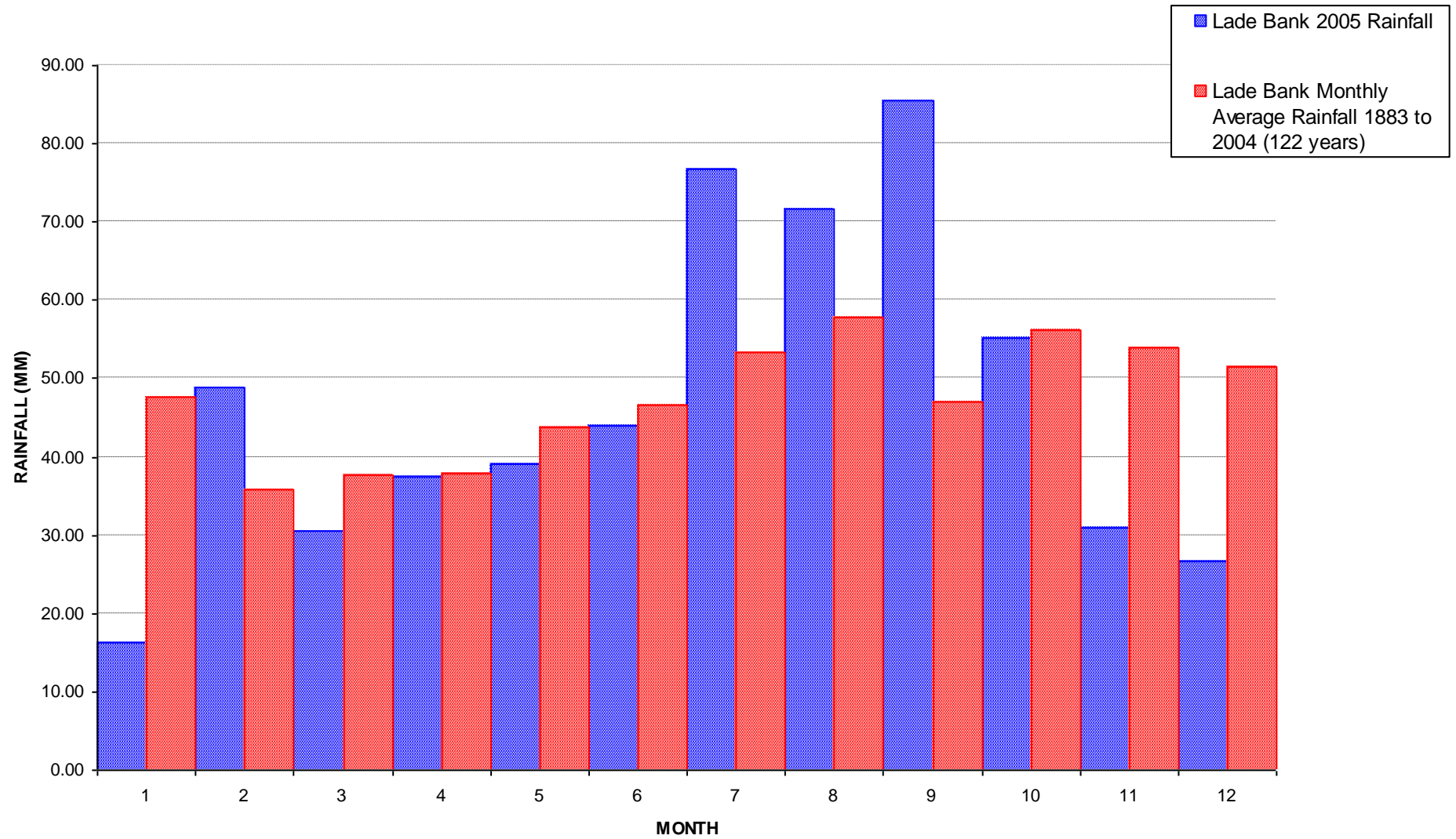


Witham Fourth District Internal Drainage Board

Rainfall 2005

Rainfall Station	Jan	Feb	Mar	Apr	May	Jun	July	Aug	Sep	Oct	Nov	Dec	Total (mm)	Total (ins)	% International Standard Av.at Lade Bank**
Lade Bank	16.20	48.90	30.60	37.50	39.00	44.00	76.80	71.60	85.50	55.20	31.00	26.70	563.00	22.17	97.8%
Hobhole	25.30	33.50	23.50	34.00	36.80	42.20	89.00	63.70	90.80	45.80	32.10	31.90	548.60	21.60	95.3%
Leverton	18.00	42.80	26.70	39.10	36.00	39.80	89.00	80.60	73.20	52.00	31.40	28.70	557.30	21.94	96.8%
Halton Fenside	20.70	55.40	15.00	49.60	38.50	39.80	86.90	73.00	72.40	50.00	34.30	31.10	566.70	22.31	98.5%
Cannister	16.20	46.50	20.10	38.20	36.10	50.10	53.50	67.80	77.10	44.00	32.60	28.10	510.30	20.09	88.7%
New York	22.50	48.70	22.30	47.50	35.30	53.20	65.40	60.60	74.00	50.20	25.30	22.60	527.60	20.77	91.7%
													<b>Yearly Ave</b>		
Monthly Av. (mm)	19.82	45.97	23.03	40.98	36.95	44.85	76.77	69.55	78.83	49.53	31.12	28.18	545.58	(mm)	94.8%
Monthly Av. (ins)	0.78	1.81	0.91	1.61	1.45	1.77	3.02	2.74	3.10	1.95	1.23	1.11	21.48	(ins)	
Monthly Average Lade Bank 1883 to 2004 (122 years)															
(mm)	47.56	35.82	37.58	37.97	43.80	46.64	53.31	57.79	47.06	56.23	54.00	51.48	569.25	(mm)	
(ins)	1.87	1.41	1.48	1.49	1.72	1.84	2.10	2.28	1.85	2.21	2.13	2.03	22.41	(ins)	
2005 Average/Lade Bank 122 Year Average %															
	41.7%	128.3%	61.3%	107.9%	84.4%	96.2%	144.0%	120.3%	167.5%	88.1%	57.6%	54.7%	95.8%		
The 30 Year International Standard Average at Lade Bank (1961 to 1990) 575.62															
Year	1993	1994	1995	1996	1997	1998	1999	2000	2001	2002	2005	2004	2005		
Av. Total for Area (mm)	699.50	644.40	464.30	457.43	624.25	710.28	678.08	711.25	652.48	709.92	529.03	672.18	531.32		
Av. Total for Area (ins)	27.54	25.37	18.28	18.01	24.58	27.96	26.70	28.00	25.69	27.95	20.83	26.46	20.92		
% Int. Standard Ave.	121.5%	111.9%	80.7%	79.5%	108.4%	123.4%	117.8%	123.6%	113.4%	123.3%	91.9%	116.8%	92.3%		

# LADE BANK RAINFALL



### Lade Bank - Rainfall Statistics

JANUARY		FEBRUARY		MARCH			APRIL	
Maximum	Minimum	Maximum	Minimum	Maximum	Minimum	Maximum	Minimum	
YEAR mm	YEAR mm	YEAR mm	YEAR mm	YEAR mm	YEA R mm	YEAR mm	YEAR mm	
1956 133.15	1953 17.53	1900 110.03	1947 5.59	1947 96.56	1961 7.37	2000 106.00	1912 5.34	
1943 105.45	2005 16.20	1977 109.00	1886 5.34	1981 92.20	1929 7.11	1970 81.57	1890 5.34	
1948 97.32	1901 14.23	1958 85.89	1959 5.08	1909 79.53	1944 6.61	1983 79.00	1974 5.30	
1999 95.30	1905 13.98	1966 81.57	1891 1.78	1988 77.60	1935 6.61	1981 77.40	1938 4.32	
1960 91.98	1997 13.40	1980 75.90	1985 1.70	1951 75.47	1938 5.08	1920 71.91	1893 2.54	
<b>AVER. 47.56</b>		<b>AVER. 35.82</b>		<b>AVER. 37.58</b>		<b>AVER. 37.97</b>		
2005 16.20		2005 48.90		2005 30.60		2005 37.50		
MAY		JUNE		JULY			AUGUST	
1979 105.10	1947 10.67	1966 123.49	1976 7.90	1915 168.47	1921 10.42	1912 156.27	1983 9.20	
1967 104.69	1959 6.35	1978 122.90	1887 7.62	1936 151.70	1952 9.66	1917 113.07	2003 6.30	
1937 103.67	1935 5.59	1997 120.00	1960 7.62	1888 138.23	1911 8.13	1903 110.53	1995 3.00	
1889 95.54	1970 5.34	1980 115.70	1962 4.57	2002 125.30	1906 6.10	1927 107.48	1913 0.76	
1932 94.02	1989 4.00	2005 115.20	1925 2.03	1940 125.02	1982 3.90	1992 106.00	1947 0.51	
<b>AVER. 43.80</b>		<b>AVER. 46.64</b>		<b>AVER. 53.91</b>		<b>AVER. 57.79</b>		
2005 39.00		2005 44.20		2005 76.80		2005 71.60		
SEPTEMBER		OCTOBER		NOVEMBER			DECEMBER	
1883 205.57	1915 10.16	1903 145.35	1920 10.93	1970 115.11	1945 21.34	1915 124.76	1941 15.75	
1896 138.99	1996 6.70	1960 133.15	1965 9.40	1946 115.11	1889 20.33	1965 121.71	1913 15.75	
1965 106.47	1969 6.35	1885 121.97	1978 8.90	2000 100.10	1896 18.30	1978 117.00	1933 13.47	
1993 102.70	1959 4.57	1892 119.17	1947 5.84	1939 99.10	1909 17.02	1914 112.06	1890 12.45	
1991 102.40	1898 4.07	1891 104.44	1972 4.32	1969 98.34	1920 11.43	1960 106.47	1932 8.64	
<b>AVER. 47.06</b>		<b>AVER. 56.23</b>		<b>AVER. 54.00</b>		<b>AVER. 51.48</b>		
2005 85.50		2005 55.20		2005 31.00		2005 26.70		

  Wettest month in 2005    
   Driest month in 2005    
   5 Wettest months recorded    
   5 driest months recorded

#### TOP 10 ANNUAL RAINFALLS RECORDED

Maximum		Minimum		Maximum Daily Totals		
YEAR	mm	YEAR	mm	YEAR	MONTH DATE	mm
1883	852.00	1921	337.19	1883	SEP ?	91.00
1960	761.54	1887	393.35	1968	JUL 10	63.75
1903	733.08	1890	396.14	1993	OCT 12	59.10
1966	730.28	1995	428.80	1912	AUG 26	57.15
2000	711.25	1947	438.32	1956	JAN 8	54.61
1912	705.89	1934	439.59	2002	JUL 30	53.40
1886	704.37	1964	443.66	1931	AUG 8	51.05
1965	703.60	1959	444.68	1967	AUG 10	48.51
1992	701.50	1905	450.77	1900	DEC 31	48.26
1968	692.68	1929	452.04	1978	JUN 29	47.50
<b>AVER. 569.25</b>						
2005 563.00				2005 Sept 09 27.40		
1894 - 2005 (excluding 1901) data unavailable for missing years						