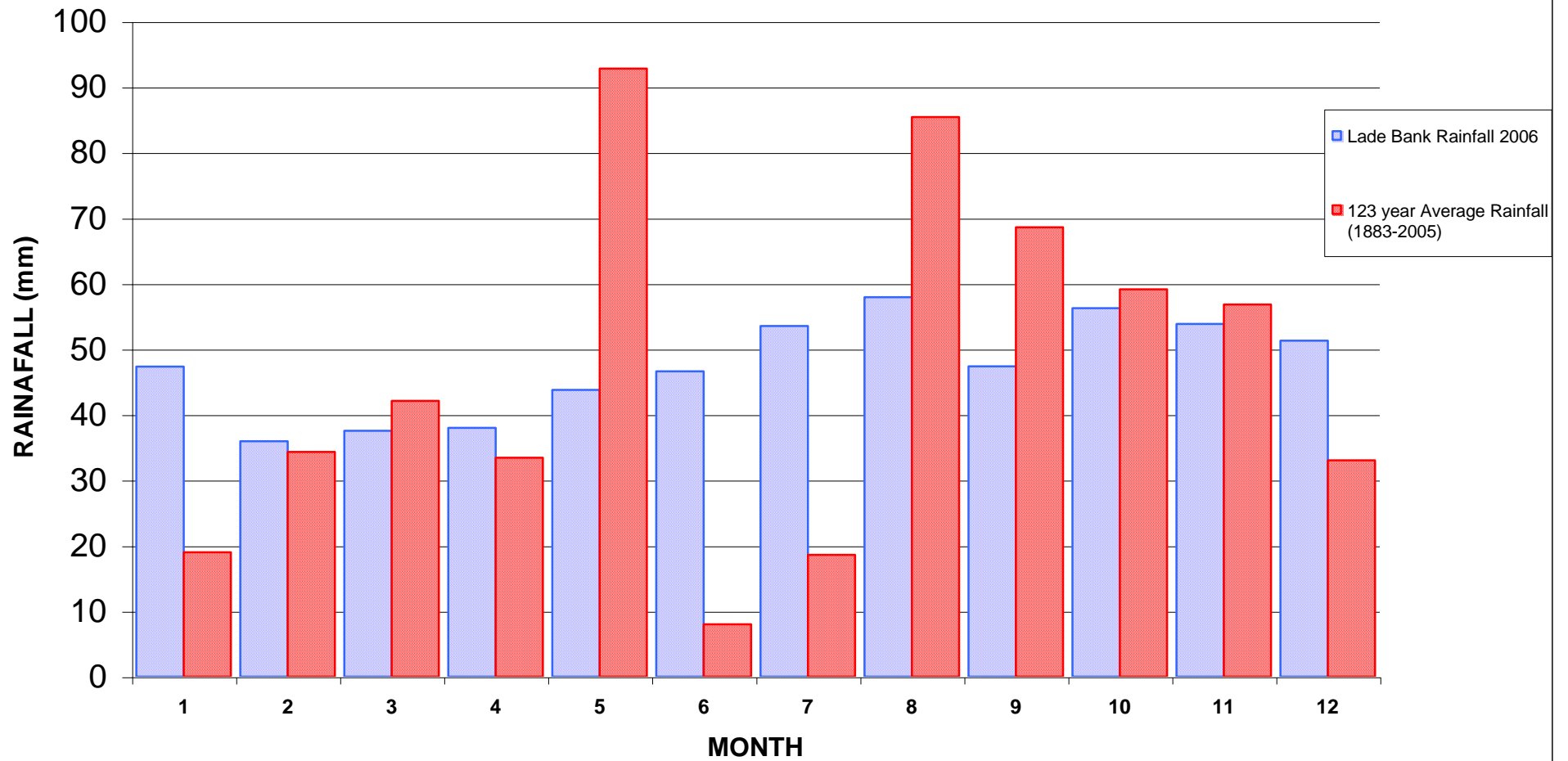


Rainfall 2006

Rainfall Station	Jan	Feb	Mar	Apr	May	Jun	July	Aug	Sep	Oct	Nov	Dec	Total (mm)	Total (ins)	% International Standard Av. at Lade Bank**
Lade Bank	19.0	34.3	42.1	33.4	92.8	8.0	18.6	85.4	68.6	59.1	56.8	33.0	551.1	21.70	95.7%
Hobhole	16.1	32.2	37.4	38.1	95.5	9.5	24.9	80.8	53.4	58.4	59.1	46.6	552.0	21.73	95.9%
Leverton	24.2	36.0	39.8	35.5	94.0	10.7	34.2	90.9	73.2	59.2	53.4	36.8	587.9	23.15	102.1%
Halton Fenside	20.4	33.1	39.1	33.4	85.0	8.5	13.4	63.2	64.1	69.6	55.5	43.7	529.0	20.83	91.9%
Cannister	12.2	35.1	40.5	34.1	101.0	10.3	28.4	99.1	54.1	64.3	49.1	33.4	528.2	20.80	91.8%
New York	13.3	32.2	38.3	29.4	92.5	11.9	23.1	91.2	50.6	53.1	55.9	40.9	532.4	20.96	92.5%
Yearly Av.															
Monthly Av. (mm)	17.53	33.82	39.53	33.98	93.47	9.82	23.77	85.10	60.67	60.62	54.97	39.07	552.33	(mm)	96.0%
Monthly Av. (ins)	0.69	1.33	1.56	1.34	3.68	0.39	0.94	3.35	2.39	2.39	2.16	1.54	21.75	(ins)	
Monthly Average Lade Bank 1883 to 2005 (123 years)															
(mm)	47.31	35.92	37.52	37.97	43.76	46.62	53.5	57.9	47.37	56.22	53.82	51.28	569.19	(mm)	
(ins)	1.86	1.41	1.48	1.49	1.72	1.84	2.11	2.28	1.86	2.21	2.12	2.02	22.41	(ins)	
2006 Average/Lade Bank 123 Year Average %															
	37.1%	94.1%	105.4%	89.5%	213.6%	21.1%	44.4%	147.0%	128.1%	107.8%	102.1%	76.2%	97.0%		
The 30 Year International Standard Average at Lade Bank (1961 to 1990) = 575.62mm															
Year	1994	1995	1996	1997	1998	1999	2000	2001	2002	2003	2004	2005	2006		
Av. Total for Area (mm)	644.40	464.30	457.43	624.25	710.28	678.08	711.25	652.48	709.92	529.03	672.18	545.58	552.33		
Av. Total for Area (ins)	25.37	18.28	18.01	24.58	27.96	26.70	28.00	25.69	27.95	20.83	26.46	21.48	21.75		
% Int. Standard Av.	111.9%	80.7%	79.5%	108.4%	123.4%	117.8%	123.6%	113.4%	123.3%	91.9%	116.8%	94.8%	96.0%		

LADE BANK RAINAFALL



Lade Bank - Rainfall Statistics

JANUARY			FEBRUARY			MARCH			APRIL						
Maximum	Minimum		Maximum	Minimum		Maximum	Minimum		Maximum	Minimum					
YEAR	mm	YE A	YEAR	mm	YE A	YEAR	mm	YE A	YEAR	mm	YE A				
mm	R	mm	R	mm	R	mm	R	mm	R	mm	R				
1956	133.1	5	1953	110.0	3	1947	96.56	1961	106.0	0	1912	5.34			
1943	105.4	5	2005	109.0	0	1886	92.20	1929	81.57	1890	5.34				
1948	97.32	1901	14.23	1958	85.89	1959	5.08	1909	79.53	1944	6.61	1983	79.00	1974	5.30
1999	95.30	1905	13.98	1966	81.57	1891	1.78	1988	77.60	1935	6.61	1981	77.40	1938	4.32
1960	91.98	1997	13.40	1980	75.90	1985	1.70	1951	75.47	1938	5.08	1920	71.91	1893	2.54
AVER. 47.31			AVE			AVE			AVER						
2006 19.00			R. 35.92			R. 37.52			. 37.97						
			2006 34.30			2006 42.10			2006 33.40						
MAY			JUN			JULY			AUGUST						
1979	105.1	0	1947	123.4	9	1976	168.47	1921	156.27	1983	9.20				
1967	104.6	1959	6.35	1978	122.9	1887	7.62	1936	151.70	1952	9.66	1917	113.0	2003	6.30
	9				0					7					
1937	103.6	7	1935	120.0	0	1960	138.23	1911	110.5	3	1995	3.00			
1889	95.54	1970	5.34	1980	115.7	0	1962	125.30	1906	6.10	1927	107.4	1913	0.76	
					115.2										
1932	94.02	1989	4.00	2005	0	1925	125.02	1982	106.0	0	1947	0.51			
AVER. 43.76			AVE			AVE			AVER						
2006 92.80			R. 46.62			R. 53.50			. 57.90						
			2006 8.00			2006 18.60			2006 85.40						
SEPTEMBER			OCTOBER			NOVEMBER			DECEMBER						
1883	205.5	1915	10.16	1903	145.3	1920	115.11	1945	124.76	1941	15.75				
	138.9								121.7						
1896	106.4	9	1996	121.9	1960	133.15	1965	115.11	1889	20.33	1965	1	1913	15.75	
1965	102.7	7	1969	119.1	1885	7	1978	100.10	1896	18.30	1978	0	1933	13.47	
1993	102.4	0	1959	104.4	1892	7	1947	99.10	1909	17.02	1914	6	1890	12.45	
1991	102.4	0	1898	104.4	1891	4	1972	98.34	1920	11.43	1960	7	1932	8.64	
AVER. 47.37			AVE			AVE			AVE						
2006 68.60			R. 56.22			R. 53.82			R. 51.28						
			2006 59.10			2006 56.80			2006 33.00						

 Wettest month in 2006

 Driest month in 2006

 5 Wettest months recorded

 5 Driest months recorded

TOP 10 ANNUAL RAINFALLS RECORDED

Maximum		Minimum		Maximum Daily Totals			
YEAR	mm	YEAR	mm	YEAR	MONTH	DATE	mm
1883	852.00	1921	337.19	1883	SEP	?	91.00
1960	761.54	1887	393.35	1968	JUL	10	63.75
1903	733.08	1890	396.14	1993	OCT	12	59.10
1966	730.28	1995	428.80	1912	AUG	26	57.15
2000	711.25	1947	438.32	1956	JAN	8	54.61
1912	705.89	1934	439.59	2002	JUL	30	53.40
1886	704.37	1964	443.66	1931	AUG	8	51.05
1965	703.60	1959	444.68	1967	AUG	10	48.51
1992	701.50	1905	450.77	1900	DEC	31	48.26
1968	692.68	1929	452.04	1978	JUN	29	47.50
AVER.	569.19						
2006	551.00			2006	May	06	33.7
				1894 - 2006 (excluding 1901) data unavailable for missing year			